

## DESCRIPTION

- 8 models - up to 50 000 m<sup>3</sup>/h.
  - Modular Air Handling Unit for heat recovery or only exhaust/supply air.
  - Construction using galvanised steel profiles and double skinned panels.
  - External finish in Aluzinc AZ185: Corrosion class C4.
  - Insulation : mineral wool 50mm, density 70 kg/m<sup>3</sup>.
  - Values EN1886: D2, L1/L2, T3, TB3, F9.
  - AC motors, impeller fans or axial ZerAX.
  - Easy access and maintenance: rail mounted components, lit inspection hatches (optional), doors on adjustable hinges, removable with lockable handles.
  - High efficiency rotary heat exchanger (Eurovent AARE) with choice of efficiency level. Can be delivered in sections (depending on size).
  - Integrated purge section to preserve the quality of air indoors.
  - 3 types of rotary heat exchanger:
    - Standard aluminium with condensation.
    - Hygroscopic.
    - Epoxy: ideal for corrosive atmospheres (i.e.: sea air).
  - Cross-flow heat exchanger (as per ERP 2016 and dependant on model) as standard aluminium or epoxy. Stainless steel condensates tray and integrated modulated bypass, resistant to corrosion, depending on version.
  - Run-around coil (Twin coil) heat exchanger.
  - Choice of filters to guarantee air quality: ISO Coarse 60% (G4) or ISO ePM10 50% (M5) flat or dihedral filters, ISO ePM1 65% (F7) dihedral filters. Other types on demand.
  - Integrated switch, depending on model.
- EXcon 100% Plug & Play control:
- Constant airflow.
  - Constant pressure.
  - Variable airflow by CO<sub>2</sub>/VOC sensor (0-10 V signal).
  - Regulated pressure: pressure control optimised to adapt pressure set point according to measured airflow, ensuring energy efficiency.
  - Temperature control.
  - Integrated clock: operating hours can be controlled with timer.
  - Configuration and monitoring via remote, touch-sensitive controls.
  - BMS communication protocols :
    - Integrated webservice TCP/IP RJ45
    - ModbusRTU RS485
    - BACnet TCP/IP
    - LON (option)
  - Version without controls also available

## FIELD OF APPLICATION

- Heat recovery ventilation or only exhaust/supply air for energy-efficient non-residential buildings of all types: offices, schools, shops, etc.
- Filtration, preheating and cooling of incoming air.

## INSTALLATION

- Flat G4 filters/pre-filters.
- Filters M5 - flat or dihedral.
- Filters F7 dihedral.
- Other types of filter on request.

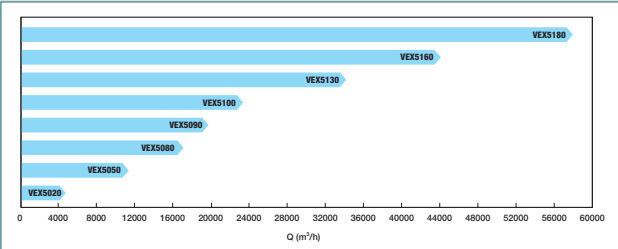
## ADVANTAGES

- Modularity : heat recovery or exhaust/supply air.
- Wide airflow range.
- Extreme temperature resistance.

## COMPLIANCE(S)

- Eurovent Certification (AHU)<sup>(2)</sup>.
- CE-conformity.
- ErP<sup>(1)</sup>.

## RANGE



The capacity for each model is defined from the indications given for EcoDesign ErP2016. See the VEX308 EXselect software for details of each individual unit.

## DIMENSIONS (mm) - WEIGHT (kg)

Due to the modular nature, the sizes vary enormously: select using the EXselectPRO software for the real characteristics of your unit.

## ACCESSORIES

- Flat G4 filters/pre-filters.
- Filters M5 - flat or dihedral.
- Filters F7 dihedral.
- Other types of filter on request.

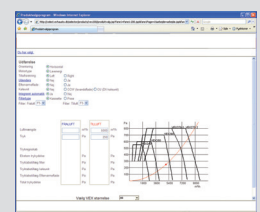
In order to provide a good quality of interior air and make your unit energy efficient, we would recommend you change your G4/M5 filter every three months, and your F7/F9 filter every 6 months, or when your filter monitoring alarm is triggered. This frequency may change, depending on the level of pollution.

## AVAILABLE OPTIONS

- Version with or without ExCon control.
- It is possible for delivery on a frame or on feet to facilitate installation or in separate units to facilitate site access.
- Exterior version, assembled and fixed on frame. Roof fitted in the factory, rain cap with anti-bird grille.
- Inspection hatches with lighting.
- Hot water coil.
- Cold water coil.
- Electric battery with TRIAC control.
- Direct suspension cold coil (DX-)
- Recycling unit.
- High efficiency rotary heat exchanger.
- Rotary heat exchanger : epoxy or hygroscopic.
- Cross-flow or run-around/Twin coil heat exchangers.
- Motorised dampers.

## SELECTION SOFTWARE

- Available soon on EXselectPRO: simple and user-friendly selection of the VEX5000 unit that best meet your needs and the configuration of the building. Free to download from the web.



(1) In accordance with eco design regulation 1253/2014.

(2) Participation in the Eurovent Certita Certification programme for Air Handling Units (AHU): the certified model data is listed in the Eurovent Directory.